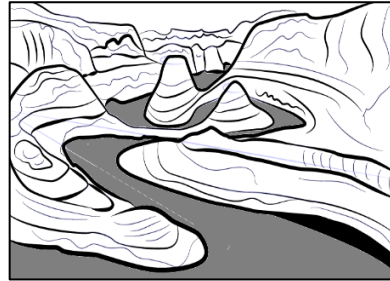


Community Waters WORD WALL CARDS

erosion



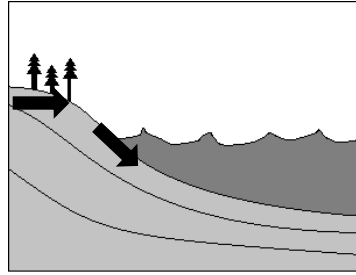
soil



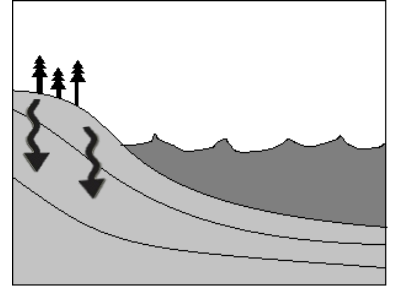
urban



runoff



groundwater



pervious



Created by Gerline Doss
from Noun Project

impervious

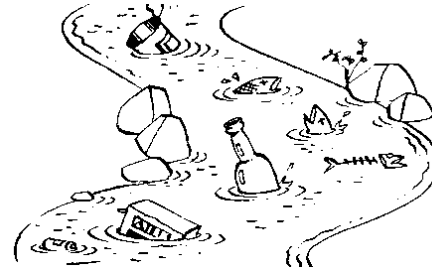


Created by Wira
from Noun Project

storm drain



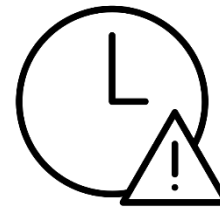
pollution



stormwater



constraints



Created by LAFS
from Noun Project



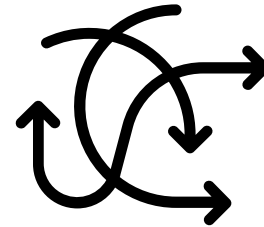
Created by Gregor Cresnar
from Noun Project

criteria for success



Created by IconMark
from Noun Project

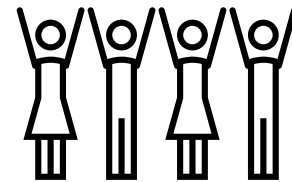
problem



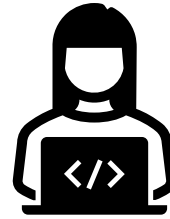
optimize



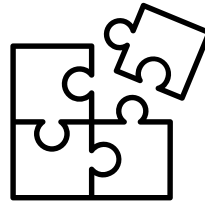
stakeholder



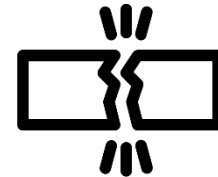
engineer



solution



failure point



Created by Arthur Shlain
from the Noun Project

Engineering Design Process

fair test

variables

changed variable

controlled variable

measured variable

model

slope