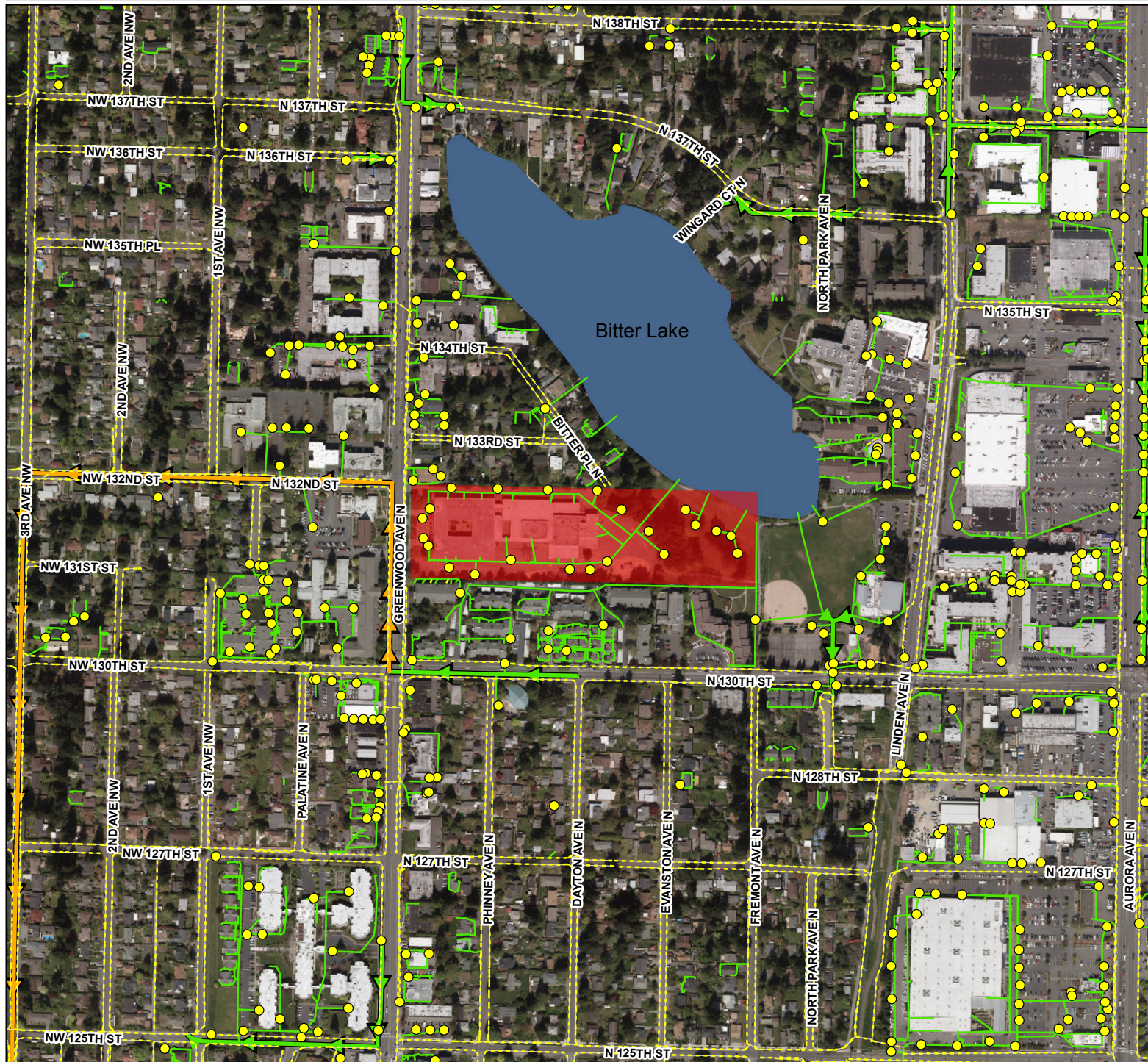


Broadview-Thompson K-8



School Property

City of Seattle Data

- Storm Drain
- Storm Ditch

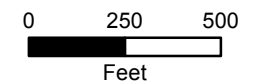
Smaller Connections

- Storm Pipe

Larger Connections

- Sewer and Storm Pipe
- Storm Pipe

1 in = 500 feet



King County

Department of
Natural Resources and Parks
**Wastewater Treatment
Division**

The information included on this map has been compiled by King County staff from a variety of sources and is subject to change without notice. King County makes no representations or warranties, express or implied, as to accuracy, completeness.

January 2017

File Name:
Q:\WTD\Projects\EducationCenter_Brightwater\Projects\BroadviewElementary.mxd
Source Info: 2015 Aerial Imagery

* Intended for an Elementary School Audience